

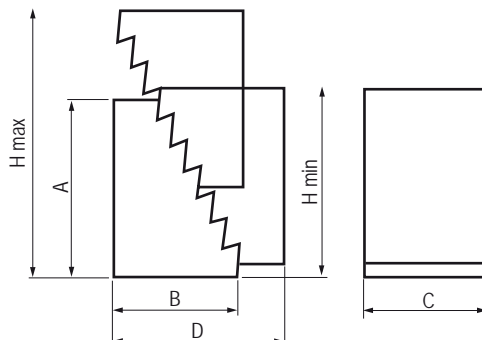
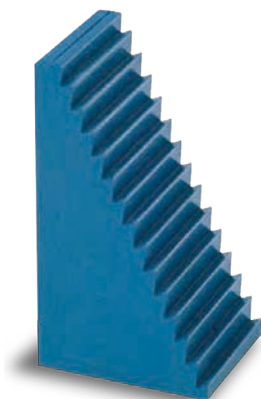
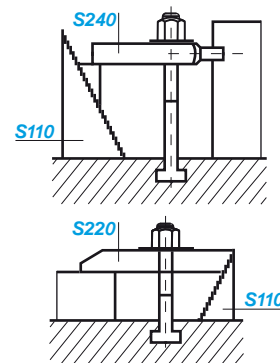
ELEMENTI MODULARI
DI STAFFAGGIO

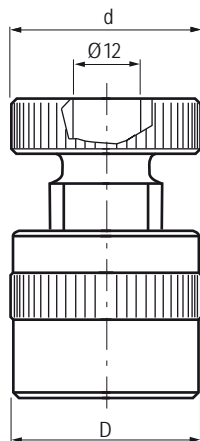
MODULAR CLAMPING TOOLS



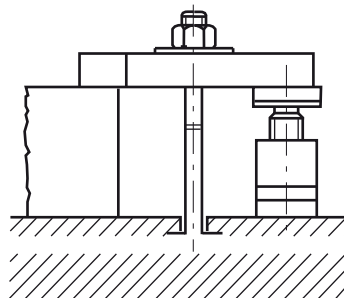
Dimensioni mm / Dimensions mm	A	B	C	D	h min	H max	gr	Cod.	€
Art. S110									
31.5	22	30	38	31,5	53	90	S110.00001	9	
64.5	36.5	30	70	64,5	105	300	S110.00002	12	
128	68	30	132	128	208	1050	S.110.00003	20	

Art. S110

 Appoggi dentati
Toothed supports

 Altezza gradino: verticale = 4,65 mm / Orizzontale = 2,3 mm
Height of tooth: vertical = 4,65 mm / horizontal = 2,3 mm

Art. S120

 Appoggi a vite
Screw supports


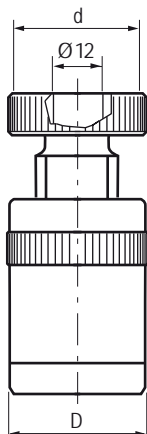
h min	H max	d	D	kN	gr	Passo	Cod.	€
38	50	34	34	20	190	M30	S120.00050	25
50	70	50	50	60	620	M30	S120.00070	33
70	100	50	50	60	900	M30	S120.00100	38
100	140	65	70	105	2600	Q 40 x 6	S120.00140	54
140	210	70	80	180	4900	Q 40 x 6	S120.00210	72
190	300	80	100	360	10500	Q 40 x 6	S120.00300	133


Art. S121

 Appoggi a vite con base in alluminio
Screw supports with aluminium base

h min	H max	d	D	kN	gr	Cod.	€
42	52	50	50	30	370	S121.00050	31
60	72	50	50	30	380	S121.00070	37
70	100	50	50	30	600	S121.00100	48

Art. S122

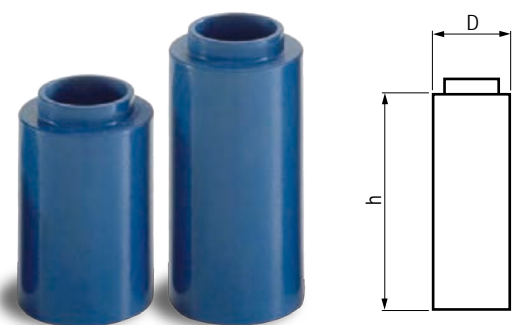
 Appoggi a vite con base magnetica
Screw supports with magnetic base


h min	H max	d	D	kN	gr	Cod.	€
57	64	50	50	30	380	S122.00050	57
75	84	50	50	30	550	S122.00070	63
85	112	50	50	30	710	S122.00100	76

 Possibilità di posizionamento e registrazione sia in orizzontale che in verticale
Possibilità di posizionamento e registrazione sia in orizzontale che in verticale

 Base-materiale Art. S121 e S122: lega in alluminio ERGAL (EN 7075 UNI 3735)
Base-material Art. S121 and S122: ERGAL aluminium alloy (EN 7075 UNI 3735)

Dimensioni mm / Dimensions mm	D	h	per Articolo	gr	Cod.	€
Art. S125 Prolunghe per appoggi a vite Extension pieces for screw supports	35	25	S120.00050	25	S125.35025	13
	35	50	"	50	S125.35050	13
	35	75	"	75	S125.35075	16
	35	100	"	100	S125.35100	18
	50	50	S120.00070 / 100	50	S125.50050	19
	50	75	"	75	S125.50075	22
	50	100	"	100	S125.50100	25
	50	150	"	150	S125.50150	30
	70	50	S120.00140	50	S125.70050	31
	70	100	"	100	S125.70100	35
70	150	"	150	S125.70150	46	
70	200	"	200	S125.70200	54	



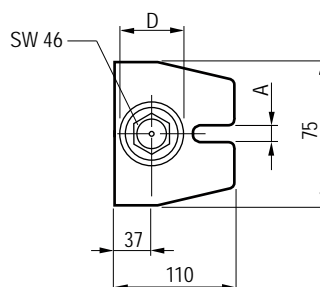
Utilizzato con l'Art. S120 permette di prolungare l'altezza dell'appoggio. Possono essere sovrapposte.
Used with S120 give possibility to extend the length of the support. They should be placed one upon another

Art. S130

Appoggi a vite ATLAS
Screw supports ATLAS type



h min	H max	A	D	kN	gr	Cod.	€
100	140	18	50	60	1800	S130.18140	72
140	200	18	50	60	2300	S130.18200	78
200	320	22	50	40	3600	S130.22320	128
320	550	22	50	25	5500	S130.22550	175



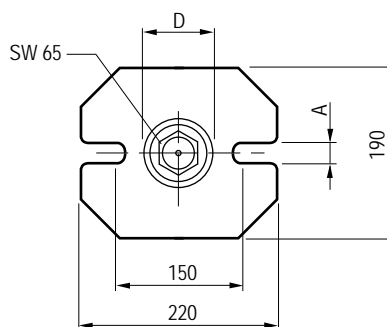
Filettatura trapezoidale passo 30 x 6. Con vite di fermo
Trapezoidal thread 30 x 6. With stationary screw

Art. S131

Appoggi a vite tipo pesante
Screw bearing type heavy



h min	H max	A	D	kN	gr	Cod.	€
200	300	26	70	80	9500	S131.00300	226
280	460	26	70	60	11000	S131.00460	295
430	750	26	70	50	13500	S131.00750	404
710	1250	26	70	45	19000	S131.01250	514

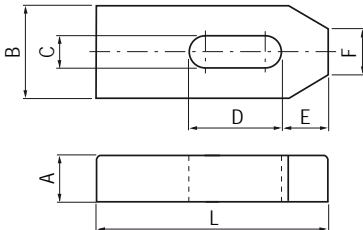
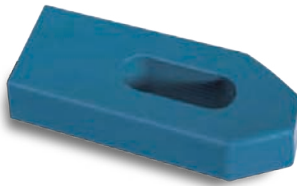


Filettatura trapezoidale passo 40 x 6
Trapezoidal thread 40 x 6

Dimensioni mm / Dimensions mm

Art. S210

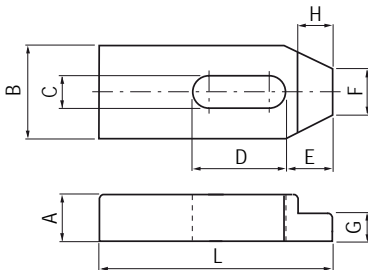
 Staffe semplici
Standard clamps

R. > 700 N / mm²


A	B	C	D	E	F	G	H	L		gr	Cod.	€
10	20	7	20	10	8			50	6	65	S210.07050	9
12	25	9	22	13	10			60	8	115	S210.09060	10
15	30	11	30	15	12			80	10	225	S210.11080	12
20	40	14	40	21	14			100	12-14	500	S210.14100	15
20	40	14	50	21	14			125	12-14	620	S210.14125	15
20	40	14	65	21	14			160	12-14	815	S210.14160	18
25	50	18	45	26	18			125	16-18	980	S210.18125	20
25	50	18	65	26	18			160	16-18	1260	S210.18160	20
25	50	18	80	26	18			200	16-18	1600	S210.18200	24
30	60	22	60	30	22			160	20-22	1850	S210.22160	27
30	60	22	80	30	22			200	20-22	2300	S210.22200	30
30	70	26	80	35	26			200	24	2650	S210.26200	31
30	70	26	105	35	26			250	24	3300	S210.26250	35
40	80	34	100	45	34			250	27-30	5000	S210.34250	52
40	80	34	130	45	34			315	27-30	6200	S210.34315	60

Art. S211

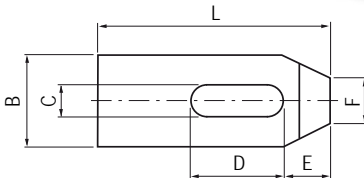
 Staffe semplici ridotte
Shaped standard clamps

R. > 700 N / mm²


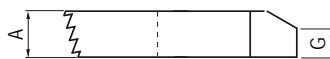
10	20	7	20	10	8	6	7	50	6	60	S211.07050	11
12	25	9	22	13	10	7	10	60	8	140	S211.09060	11
15	30	11	30	15	12	9	9	80	10	220	S211.11080	14
20	40	14	40	21	14	12	12	100	12-14	480	S211.14100	17
20	40	14	50	21	14	12	12	125	12-14	615	S211.14125	18
20	40	14	65	26	14	12	12	160	12-14	800	S211.14160	20
25	50	18	45	26	18	15	15	125	16-18	960	S211.18125	22
25	50	18	65	26	18	15	15	160	16-18	1230	S211.18160	24
25	50	18	80	26	18	15	15	200	16-18	1550	S211.18200	27
30	60	22	60	30	22	20	20	160	20-22	1800	S211.22160	27
30	60	22	80	30	22	20	20	200	20-22	2200	S211.22200	29
30	70	26	80	35	26	20	25	200	24	2450	S211.26200	32
30	70	26	105	35	26	20	25	250	24	3200	S211.26250	35
40	80	34	100	45	34	25	25	250	27-30	4800	S211.34250	55
40	80	34	130	45	34	25	25	315	27-30	6000	S211.34315	63

Art. S220

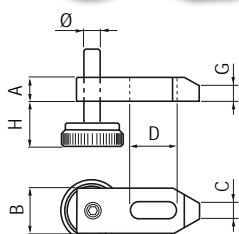
 Staffe dentate
Toothed clamps

R. > 700 N / mm²


10	20	7	20	10	8	6		50	6	55	S220.07050	10
12	25	9	22	13	10	8		60	8	125	S220.09060	11
15	30	11	30	15	12	10		80	10	205	S220.11080	12
20	40	14	40	21	14	12		100	12-14	445	S220.14100	16
25	50	18	45	26	18	15		125	16-18	930	S220.18125	19
30	60	22	60	30	22	18		160	20-22	1700	S220.22160	24
30	70	26	80	35	26	18		200	24	2500	S220.26200	35


Art. S230

 Staffe regolabili
con vite a passo fine
Adjustable clamps with
fine pitch screw

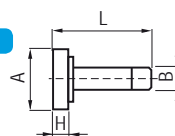
R. > 700 N / mm²


A	B	C	D	G	H	L	Ø		gr	Cod.	€
15	30	11	30	10	8-28	80	M10	10	345	S.230.11080	17
20	40	14	40	12	10-32	100	M12	12-14	680	S.230.14100	22
25	50	18	45	15	13-40	125	M16	16-18	1185	S.230.18125	27
30	60	22	60	18	18-60	160	M20	20-22	2030	S.230.22160	40

Art. S231

 Viti di ricambio
Spare screws

Viti ricambio / Spare screws		A	B	H	L	gr	Cod.	€
Art. S231		40	M10	8	60	130	S231.00010	5
		45	M12	8	60	210	S231.00012	6
		45	M16	8	70	245	S231.00016	7
		45	M20	8	80	300	S231.00020	9

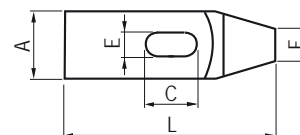
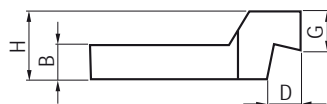


Dimensioni mm / Dimensions mm		A	B	C	D	E	F	G	H	L		gr	Cod.	€
Art. S240		15	30	9	30	18	12			100	8	205	S240.09100	18
Staffe a forcella con gambo cilindrico Forked clamps with cylindrical shank		20	30	11	36	24	16			125	10	335	S240.11125	20
R. > 600 N / mm²		25	40	14	45	30	20			160	12-14	720	S240.14260	22
		25	40	14	45	30	20			200	12-14	920	S240.14200	30
		30	50	18	55	36	24			200	16-18	1310	S240.18200	33
		30	50	18	55	36	24			250	16-18	1640	S240.18250	40
		40	60	22	65	45	30			250	20-22	2160	S240.22250	45
		40	60	22	65	45	30			315	20-22	3300	S240.22315	50
		40	70	26	80	56	38			250	24	3100	S240.26350	59
		40	70	26	80	56	38			315	24	3900	S240.26315	69
		50	80	34	85	56	45			315	27-30	5500	S240.34315	82
		50	80	34	85	56	45			400	27-30	6900	S240.34400	96

Art. S250		15	30	9	30	18	16	5		100	8	225	S250.09100	18
Staffe a forcella con nasello Forket clamps with nib		20	30	11	36	24	20	6		125	10	360	S250.11125	20
R. > 600 N / mm²		25	40	14	45	30	25	7		160	12-14	770	S250.14260	22
		25	40	14	45	30	25	7		200	12-14	950	S250.14200	30
		30	50	18	55	36	28	8		200	16-18	1420	S250.18200	33
		30	50	18	55	36	28	8		250	16-18	1700	S250.18250	40
		40	60	22	65	45	35	10		250	20-22	2790	S250.22250	45
		40	60	22	65	45	35	10		315	20-22	3480	S250.22315	50
		40	70	26	80	56	43	10		250	24	3320	S250.26350	59
		40	70	26	80	56	43	10		315	24	4270	S250.26315	69
		50	80	34	85	56	50	12		315	27-30	5700	S250.34315	82
		50	80	34	85	56	50	12		400	27-30	7250	S250.34400	96

Art. S260		40	20	30	20	14	20	23	40	125	12-14	750	S260.14125	26
Staffe a gomito Cranked clamps		50	25	40	25	18	25	28	50	160	16-18	1510	S360.18160	42
R. > 700 N / mm²		50	25	60	25	18	25	28	50	200	16-18	1790	S260.18200	46
		60	30	40	30	22	30	35	60	160	20-22	2190	S360.22160	51
		60	30	60	30	22	30	35	60	200	20-22	2700	S260.22200	62
		70	35	50	35	26	35	38	70	200	24	3660	S260.26200	65
		70	35	75	35	26	35	38	70	250	24	4560	S260.26250	69

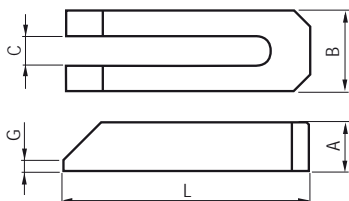
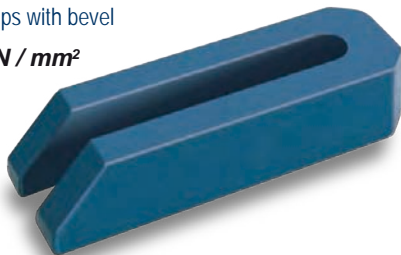
Il pregio dell'articolo sta nell'essere prodotto tramite la fresatura di un blocco d'acciaio (non è quindi piegato)
This article is produced milling a steel block (it is not produced by bending)



Dimensioni mm / Dimensions mm

Art. S270

 Staffe a forcella con smusso
 Forked clamps with bevel

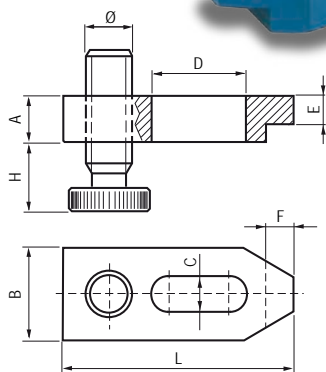
R. > 600 N / mm²

 Il pregio dell'articolo sta nell'essere prodotto tramite la
 fresatura di un blocco d'acciaio (non è quindi piegato)
 This article is produced milling a steel block
 (it is not produced by bending)

A	B	C	G	L		gr	Cod.	€
12	20	7	3	60	6	70	S.270.07060	11
15	25	9	4	80	8	150	S.270.09080	12
20	30	11	5	100	10	270	S.270.11100	13
25	40	14	6	125	12-14	590	S.270.14125	17
25	40	14	6	160	12-14	760	S.270.14160	19
25	40	14	6	200	12-14	970	S.270.14200	20
30	50	18	8	160	16-18	1160	S.270.18160	25
30	50	18	8	200	16-18	1400	S.270.18200	26
40	50	18	10	250	16-18	2330	S.270.18250	32
40	50	22	10	200	20-22	1700	S.270.22200	31
40	60	22	10	250	20-22	2880	S.270.22250	39
40	60	22	10	315	20-22	2530	S.270.22315	40
40	70	26	10	200	24	2680	S.270.26200	42
40	70	26	10	250	24	3370	S.270.26250	47
40	70	26	10	315	24	4220	S.270.26315	63
50	80	34	12	250	27-30	4480	S.270.34250	59
50	80	34	12	315	27-30	5600	S.270.34315	69
50	80	34	12	400	27-30	7150	S.270.34400	86
60	100	40	12	400	36	11700	S.270.40400	131
60	100	40	12	600	36	17300	S.270.40600	172

Dimensioni mm / Dimensions mm

Art. S280

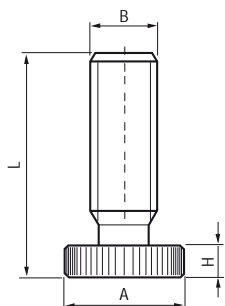
 Staffe regolabili con vite a passo quadro
 Adjustable clamps with square thread screw

R. > 700 N / mm²


A	B	C	D	E	F	H	L	Ø		gr	Cod.	€
20	40	15	40	12	12	15-50	100	20x4	12-14	620	S280.14100	29
20	40	15	45	12	12	15-50	125	20x4	12-14	770	S280.14125	31
20	40	15	60	12	12	15-50	160	20x4	12-14	950	S280.14160	33
25	50	19	45	15	15	15-70	125	20x4	16-18	1090	S280.18125	35
25	50	19	60	15	15	15-70	160	30x6	16-18	1640	S280.18160	37
25	50	19	80	15	15	15-70	200	30x6	16-18	1970	S280.18200	41
30	60	23	60	15	20	15-70	160	30x6	20-22	2120	S280.22160	46
30	60	23	80	15	20	15-70	200	30x6	20-22	2570	S280.22200	49
40	70	27	80	25	23	15-70	200	30x6	24	3700	S280.26200	35
40	70	27	100	25	23	15-70	250	30x6	24	4620	S280.26250	55
40	70	27	100	25	23	15-70	300	30x6	24	5740	S280.26300	59

Dimensioni mm / Dimensions mm

Art. S281

 Viti di ricambio per staffe
 Spare screw for clamps


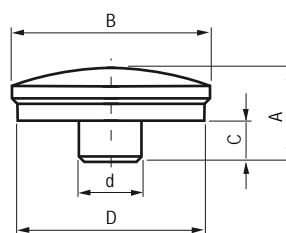
A	B	H	L	gr	Cod.	€
35	20 x 4	70	10	190	S281.20004	12
45	30 x 6	100	15	540	S281.30006	17
70	30 x 6	125	15	1050	S281.30006.A	20

 Filetto TPN passo quadro.
 Materiale: 35SMnPb 10 UNI 4838. Classe 8.8
 TPN thread square pitch.
 Material: SMnPb 10 UNI 4838. Class 8.8

Dimensioni mm / Dimensions mm	A	B	C	D	d	gr	Cod.	€
Art. S151	18	37	8	35	12	70	S151.00035	14

Art. S151

Puntali bombati
Convex caps

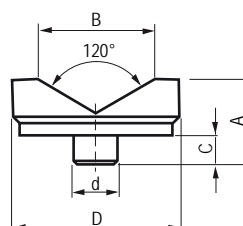
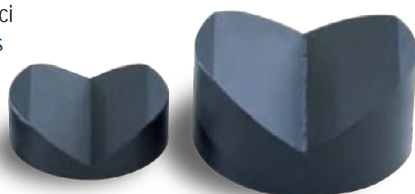


Utilizzati su Art. S120, S121, S122, S130, S131
Used on Art. S120, S121, S122, S130, S131

23	32	8	45	12	145	S152.00045	19
38	56	8	65	12	580	S152.00065	24

Art. S152

Puntali prismatici
"V" groove caps

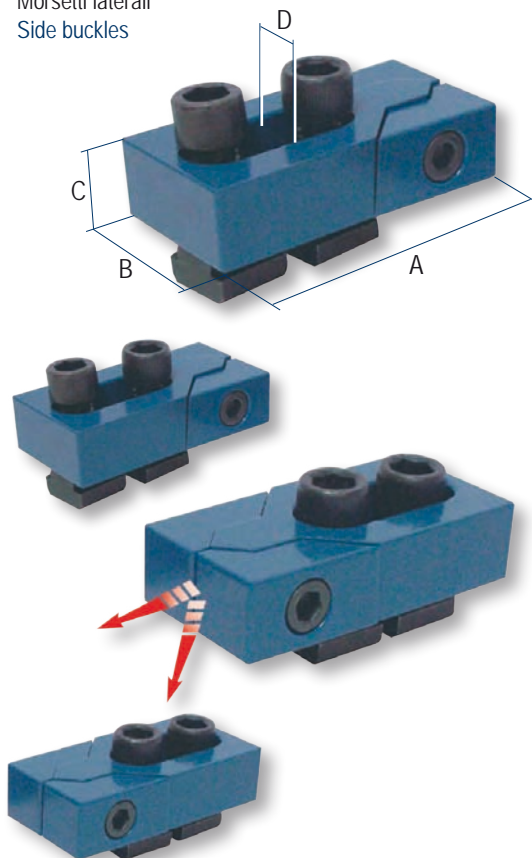


Utilizzati su Art. S120, S121, S122, S130, S131
Used on Art. S120, S121, S122, S130, S131

Dimensioni mm / Dimensions mm	A	B	C	D		kN F1	kN F2	gr	Cod.	€
-------------------------------	---	---	---	---	--	-------	-------	----	------	---

Art. ML10

Morsetti laterali
Side buckles



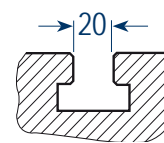
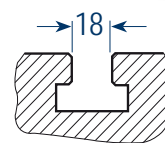
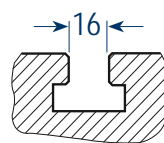
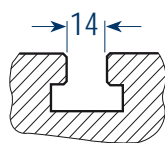
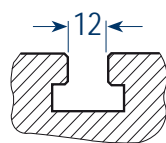
80	40	20	11,7	12	16	0,6	1040	ML10.00012	150
80	40	20	13,7	14	22	0,9	1070	ML10.00014	160
100	50	25	15,7	16	32	1,2	2040	ML10.00016	170
100	50	25	17,7	18	36	1,4	2080	ML10.00018	180
100	50	25	19,7	20	36	1,4	2290	ML10.00020	190
140	78	30	21,7	22	36	1,4	5530	ML10.00022	200
140	78	30	23,7	24	36	1,4	5800	ML10.00024	210
140	78	30	27,7	28	40	1,6	6200	ML10.00028	220
140	78	30	29,7	30	40	1,6	6800	ML10.00030	230

Costruzione a cuneo che permette il bloccaggio contemporaneo del pezzo in senso verticale e orizzontale
Forniti in coppia

Wedge type construction which enable to simultaneously clamp vertically and horizontally. Supplied in pairs

STAFFAGGI ASSORTITI ASSORTED CLAMPING TOOLS
Art. S410

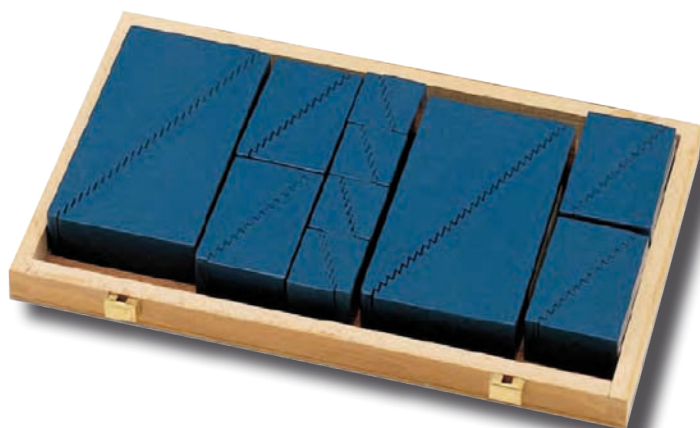
Kit 46 pezzi / pcs.



Descrizione contenuto Contents description	Cod. S410.00012	Cod. S410.00014	Cod. S410.00016	Cod. S410.00018	Cod. S410.00020
	€ 357	€ 374	€ 392	€ 418	€ 440
Appoggi dentati / Toothed support	n. 2 S110.00001	n. 2 S110.00001	n. 2 S110.00001	n. 2 S110.00001	n. 2 S110.00001
Appoggi dentati / Toothed support	n. 4 S110.00002	n. 4 S110.00002	n. 4 S110.00002	n. 4 S110.00002	n. 4 S110.00002
Appoggi dentati / Toothed support	n. 2 S110.00003	n. 2 S110.00003	n. 2 S110.00003	n. 2 S110.00003	n. 2 S110.00003
Staffe semplici / Flat clamps	n. 4 S210.14100	n. 4 S210.14125	n. 4 S210.14100	n. 4 S210.18125	n. 4 S210.22200
Staffe dentate / Toothed clamps	n. 4 S220.14100	n. 4 S220.14100	n. 4 S220.18125	n. 4 S220.18125	n. 4 S220.22160
Viti testa martello / T-slot bolts	n. 2 S310.12080	n. 2 S310.14100	n. 4 S310.16100	n. 4 S310.18150	n. 4 S310.20150
Viti testa martello / T-slot bolts	n. 4 S310.12125	n. 4 S310.14150	n. 2 S310.16150	n. 2 S310.18200	n. 2 S310.20200
Prigionieri completi / Studs	n. 2 S320.10080	n. 2 S320.12080	n. 2 S320.14100	n. 2 S320.16125	n. 2 S320.18125
Prigionieri completi / Studs	n. 2 S320.10100	n. 2 S320.12160	n. 2 S320.14160	n. 2 S320.16160	n. 2 S320.18160
Dadi prolung. / Extensions nuts	n. 4 S350.10030	n. 4 S350.12036	n. 4 S350.14042	n. 4 S350.16048	n. 4 S350.18054
Dadi altri / Turned toll nuts	n. 6 S340.12018	n. 6 S340.14021	n. 6 S340.16024	n. 6 S340.18027	n. 6 S340.20030
Tasselli per cave / T-slot nuts	n. 4 S360.10012	n. 4 S360.12014	n. 4 S360.14016	n. 4 S360.16018	n. 4 S360.18020
Rondelle / Washers	n. 6 S370.00012	n. 6 S370.00014	n. 6 S370.00016	n. 6 S370.00018	n. 6 S370.00020
Peso kg / Weight kg	10,5	12	17	18	27
Dimensioni cm / Dimensions cm	37 x 32		47 x 33		50 x 41
Cassetta in legno vuota Wooden box	Cod. S410.BOX01		Cod. S410.BOX02		Cod. S410.BOX03
	€ 99		€ 119		€ 139

APPOGGI DENTATI *MULTIPLE STEP SUPPORT***Art. S440**

Kit 20 pezzi / pcs.

Descrizione contenuto
Contents description

S110.00001	8 pezzi / pcs
S110.00002	8 pezzi / pcs
S110.00003	4 pezzi / pcs
Peso kg / Weight kg	8,5
Dimensioni cm / Dimensions cm	30,5 x 17

Cod. S440.00001

€ 230

STAFFAGGI ASSORTITI IN ALLUMINIO
ALUMINIUM ASSORTED CLAMPING TOOLS**Art. S415**

Kit 58 pezzi / pcs.

Materiale:

Composizione in lega di alluminio ERGAL EN 7075 UNI 3735
utilizzabile nello staffaggio di pezzi su macchine per misurazione e controllo.
Es. macchine tridimensionali, piani in granito ecc.

Material:

Set of brackets in ERGAL aluminium alloy EN 7075 UNI 3735, particularly for
measuring and control machines.
For example: three-dimensional control machine, granite control surfaces, etc.


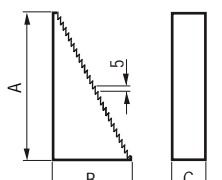
Descrizione contenuto
Contents description


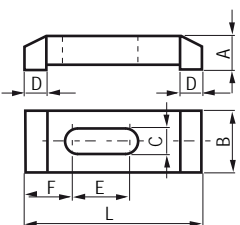
S115.00001	4 pezzi / pcs
S115.00002	4 pezzi / pcs
S115.00003	4 pezzi / pcs
S215.00065	4 pezzi / pcs
S215.00100	4 pezzi / pcs
S215.00150	4 pezzi / pcs
S225.00065	4 pezzi / pcs
S225.00100	4 pezzi / pcs
S225.00150	4 pezzi / pcs
S340.08012	16 pezzi / pcs
S325.08100	4 pezzi / pcs
S325.08125	4 pezzi / pcs
S325.08150	4 pezzi / pcs
S325.08175	4 pezzi / pcs
S325.08200	4 pezzi / pcs
S370.00008	16 pezzi / pcs
Peso kg / Weight kg	7,2
Dimensioni cm / Dimensions cm	47 x 33


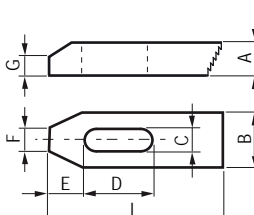
Cod. S415.00001


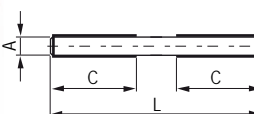
€ 860

STAFFAGGI ASSORTITI IN ALLUMINIO
ALUMINIUM ASSORTED CLAMPING TOOLS

Dimensioni mm / Dimensions mm		A	B	C	D	E	F	G	L	gr	Cod.	€
Art. S115 Appoggi dentati / Toothed supports		34	28	25						35	S115.00001	14
		66	38	25						100	S115.00002	18
		128	70	25						280	S115.00003	28

Dimensioni mm / Dimensions mm		A	B	C	D	E	F	G	L	gr	Cod.	€
Art. S215 Staffe doppie / Double clamps		15	25	9	11	28	20		65	40	S215.00065	17
		20	25	9	14	40	20		100	85	S215.00100	19
		20	30	9	18	65	24		150	150	S215.00150	25

Dimensioni mm / Dimensions mm		A	B	C	D	E	F	G	L	gr	Cod.	€
Art. S225 Staffe dentate / Toothed clamps		13	25	9	25	16	10	11	65	43	S225.00065	17
		17	25	9	46	20	11	11	100	92	S225.00100	19
		17	30	9	82	23	12	12	150	162	S225.00150	22

Dimensioni mm / Dimensions mm		A	B	C	D	E	F	G	L	gr	Cod.	€
Art. S325 Prigionieri singoli in acciaio zincati Single studs in zinked steel		M8		40					100	31	S325.08100	3
		M8		40					125	39	S325.08125	4
		M8		40					150	47	S325.08150	4
		M8		40					175	54	S325.08175	4
		M8		40					200	62	S325.08200	5

Dimensioni mm / Dimensions mm		A	B	D	H	L	T	gr	Cod.	€
Art. S310										
Vite testa martello completa di dado S340 e rondella S370 Hammerheads bolts complete with nut S340 and washer S370										
Filetto ottenuto per rollatura / Rolled thread										
11,7	55	M12	7	80	18	125		125	S310.12080	7
11,7	75	M12	7	125	18	150		150	S310.12125	7
13,7	65	M14	8	100	22	215		215	S310.14100	8
13,7	100	M14	8	150	22	270		270	S310.14150	9
15,7	63	M16	9	100	25	270		270	S310.16100	9
15,7	100	M16	9	150	25	345		345	S310.16150	9
17,7	100	M18	10	150	28	450		450	S310.18150	13
17,7	125	M18	10	200	28	530		530	S310.18200	13
19,7	100	M20	12	150	32	600		600	S310.20150	15
19,7	125	M20	12	200	32	700		700	S310.20200	15

Art. S320										
Prigionieri completi di dado S330 e rondella S370 Studs complete with short nut S330 and washer S370										
Filetto ottenuto per rollatura / Rolled thread										
13	50	M10		80		65		65	S320.10080	3
13	75	M10		100		75		75	S320.10100	3
15	50	M12		80		95		95	S320.12080	3
15	100	M12		160		155		155	S320.12160	4
17	63	M14		100		160		160	S320.14100	4
17	100	M14		160		215		215	S320.14160	5
19	75	M16		125		235		235	S320.16125	5
19	100	M16		160		295		295	S320.16160	5
23	75	M18		125		300		300	S320.18125	6
23	100	M18		160		355		355	S320.18160	6

Art. S321										
Prigionieri singoli Single studs										
Filetto ottenuto per rollatura Rolled thread										
14	25	M10		60		30		30	S321.10060	3
14	30	M10		80		40		40	S321.10080	3
14	35	M10		100		50		50	S321.10100	3
14	40	M10		120		65		65	S321.10120	3
14	50	M10		150		80		80	S321.10160	3
14	60	M10		200		100		100	S321.10200	3
15	32	M12		60		45		45	S321.12060	3
15	50	M12		80		55		55	S321.12080	3
15	63	M12		100		70		70	S321.12100	3
15	75	M12		125		90		90	S321.12125	3
15	100	M12		160		115		115	S321.12160	4
15	125	M12		200		140		140	S321.12200	4
19	35	M16		65		85		85	S321.16065	4
19	50	M16		80		105		105	S321.16080	4
19	75	M16		125		160		160	S321.16125	4
19	100	M16		160		220		220	S321.16160	5
19	125	M16		200		280		280	S321.16200	6
19	160	M16		250		325		325	S321.16250	7

! Si eseguono su richiesta misure non a catalogo / Other sizes can be supplied on request

Dimensioni mm / Dimensions mm		A	B	C	D	E	H	M	S	T	gr		Cod.	€
Art. S340						21,5	18	M12	19		28		S340.12018	2
Dadi alti torniti Turned tall nuts						25	21	M14	22		45		S340.14021	3
						27,5	24	M16	24		58		S340.16024	3
						31	27	M18	27		83		S340.18027	3
						34,6	30	M20	30		110		S340.20030	3
Art. S350						19,6	30	M10	17		42		S350.10030	3
Dadi prolungamento Extension nuts						21,5	36	M12	19		64		S350.12036	3
						25	42	M14	22		95		S350.14042	4
						27,5	48	M16	24		120		S350.16048	4
						31	54	M18	27		170		S350.18054	5
Art. S360		18	14	7	11,7			M10			12	10	S360.08010	3
Tasselli per cave a "T" Nuts for "T" slots		22	16	8	13,7			M12			22	12	S360.08012	3
		25	18	9	15,7			M14			37	14	S360.10014	3
		18	20	10	17,7			M16			59	16	S360.10016	4
		32	24	12	19,7			M18			82	18	S360.12018	5
Art. S370					10,5	22	4				9		S370.00010	1
Rondelle normali tornite Flat washer					13	28	5				20		S370.00012	1
					15	35	6				35		S370.00014	2
					17	35	6				35		S370.00016	2
					19	40	6				45		S370.00018	3
Art. S380					10,5	35	8				55		S380.00010	3
Rondelle alte tornite Thick washer					13	40	8				70		S380.00012	3
					15	40	10				85		S380.00014	3
					17	45	10				105		S380.00016	4
					19	45	10				100		S380.00018	4

! Si eseguono su richiesta misure non a catalogo / Other sizes can be supplied on request

KIT STAFFAGGI DA 58 PEZZI con appoggi dentati e staffe dentate
CLAMPING KIT / 58 PIECES with step blocks & stepped strap clamping
Art. G410


Ciascun kit include tutti i più importanti elementi di staffaggio per serrare una varietà di particolari. La tabella sottostante indica il contenuto di ogni tipologia di kit di staffaggi adatta per differenti dimensioni di cave a "T"

Each kit consists of all important clamping elements required to clamp a variety of work pieces. Following table shows the contents of each model of clamping kit suitable for different T-Slot sizes.

Il Clamping Kit **GERARDI** da 58 pezzi è disponibile in una elegante rastrelliera che può essere appesa alle macchine o su una parete o appoggiata ad un banco.

GERARDI Clamping Kit - 58 pieces is available in an attractive powder coated metallic rack which can be hung on machines or a wall or kept on a table.



DESCRIZIONE CONTENUTO CONTENTS DESCRIPTION	Cod. G410.581412	Cod. G410.581612	Cod. G410.581812	Cod. G410.581816
	€ 126	€ 126	€ 126	€ 165
	T-SLOT SIZE 14mm	T-SLOT SIZE 16mm	T-SLOT SIZE 18mm	T-SLOT SIZE 18mm
Dadi a T / T nuts	TN-14-M12 - 6 pcs	TN-16-M12 - 6 pcs	TN-18-M12 - 6 pcs	TN-18-M16 - 6 pcs
Prigionieri Clamping studs	CS-12-75 - 4 pcs CS-12-100 - 4 pcs CS-12-125 - 4 pcs CS-12-150 - 4 pcs CS-12-175 - 4 pcs CS-12-200 - 4 pcs	CS-12-75 - 4 pcs CS-12-100 - 4 pcs CS-12-125 - 4 pcs CS-12-150 - 4 pcs CS-12-175 - 4 pcs CS-12-200 - 4 pcs	CS-12-75 - 4 pcs CS-12-100 - 4 pcs CS-12-125 - 4 pcs CS-12-150 - 4 pcs CS-12-175 - 4 pcs CS-12-200 - 4 pcs	CS-16-75 - 4 pcs CS-16-100 - 4 pcs CS-16-125 - 4 pcs CS-16-150 - 4 pcs CS-16-175 - 4 pcs CS-16-200 - 4 pcs
Dadi flangiati / Flanged nuts	FN-12 - 6 pcs	FN-12 - 6 pcs	FN-12 - 6 pcs	FN-16 - 6 pcs
Dadi prolungamento / Extension nuts	EN-12 - 4 pcs	EN-12 - 4 pcs	EN-12 - 4 pcs	EN-16 - 4 pcs
Staffe dentate Stepped strap clamps	SSC-12-65 - 2 pcs SSC-12-100 - 2 pcs SSC-12-140 - 2 pcs	SSC-12-65 - 2 pcs SSC-12-100 - 2 pcs SSC-12-140 - 2 pcs	SSC-12-65 - 2 pcs SSC-12-100 - 2 pcs SSC-12-140 - 2 pcs	SSC-16-65 - 2 pcs SSC-16-100 - 2 pcs SSC-16-140 - 2 pcs
Appoggi dentati Step blocks	SB-1 - 2 Pairs (4 pcs) SB-2 - 2 Pairs (4 pcs) SB-3 - 2 Pairs (4 pcs)	SB-1 - 2 Pairs (4 pcs) SB-2 - 2 Pairs (4 pcs) SB-3 - 2 Pairs (4 pcs)	SB-1 - 2 Pairs (4 pcs) SB-2 - 2 Pairs (4 pcs) SB-3 - 2 Pairs (4 pcs)	SB-1 - 2 Pairs (4 pcs) SB-2 - 2 Pairs (4 pcs) SB-3 - 2 Pairs (4 pcs)
N° totale pezzi / Total n. of pieces	58 pieces	58 pieces	58 pieces	58 pieces
Peso lordo totale / Total gross weight	15 kg	15 kg	15 kg	20 kg

KIT STAFFAGGI DA 34 PEZZI con pistre di appoggio regolabili e piastre dentate
CLAMPING KIT / 34PIECES with adjustable support plates & strap clamps

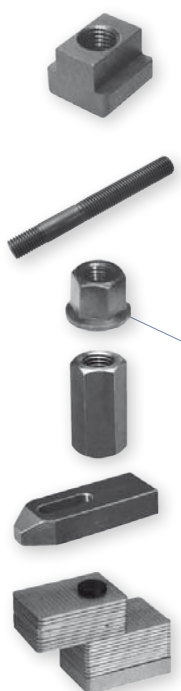
Art. G411



Il Clamping Kit **GERARDI** da 34 pezzi è un clamping kit economico alloggiato in una elegante scatola di legno.

GERARDI Clamping Kit - 34 pieces is an economical clamping kit housed in an elegant wooden box.

La tabella sottostante indica il contenuto di ogni tipologia di kit di staffaggi adatta per different dimensioni di cave a "T"
 Following table shows the contents of each model of clamping kit suitable for different T-Slot sizes.



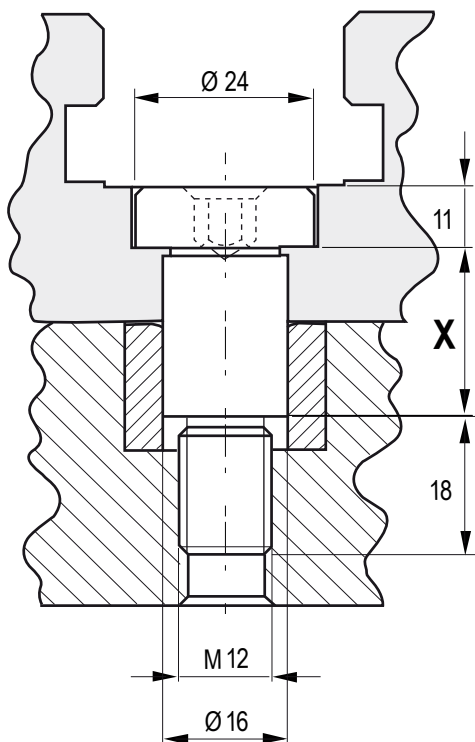
DESCRIZIONE CONTENUTO CONTENTS DESCRIPTION	Cod. G411.341412	Cod. G411.341612	Cod. G411.341812
	€ 90	€ 90	€ 90
	T-SLOT SIZE 14mm	T-SLOT SIZE 16mm	T-SLOT SIZE 18mm
Dadi a T / T nuts	TN14-M12 - 4 pcs	TN16-M12 - 4 pcs	TN18-M12 - 4 pcs
Prigionieri Clamping studs	CS-12-75 - 4 pcs CS-12-100 - 4 pcs CS-12-150 - 4 pcs CS-12-200 - 4 pcs	CS-12-75 - 4 pcs CS-12-100 - 4 pcs CS-12-150 - 4 pcs CS-12-200 - 4 pcs	CS-12-75 - 4 pcs CS-12-100 - 4 pcs CS-12-150 - 4 pcs CS-16-200 - 4 pcs
Dadi flangiati / Flanged nuts	FN-12 - 4 pcs	FN-12 - 4 pcs	FN-12 - 4 pcs
Dadi prolungamento / Extension nuts	EN-12 - 2 pcs	EN-12 - 2 pcs	EN-12 - 2 pcs
Staffe dentate Stepped strap clamps	SSC-12-100 - 2 pcs SSC-12-125 - 2 pcs	SSC-12-100 - 2 pcs SSC-12-125 - 2 pcs	SSC-12-100 - 2 pcs SSC-12-125 - 2 pcs
Piastre di appoggio regolabili Adjustable support plates	ASP-250 - 2 pcs ASP-2100 - 2 pcs	ASP-250 - 2 pcs ASP-2100 - 2 pcs	ASP-250 - 2 pcs ASP-2100 - 2 pcs
N° totale pezzi / Total n. of pieces	34 pieces	34 pieces	34 pieces
Peso lordo totale / Total gross weight	-	-	-

Dimensioni mm / Dimensions mm

X = mm	gr	Cod.
30	60	8.83.16300
35	70	8.83.16350
40	80	8.83.16400
45	90	8.83.16450
50	90	8.83.16500
55	100	8.83.16550
60	100	8.83.16600
65	110	8.83.16650
70	120	8.83.16700
75	130	8.83.16750
80	140	8.83.16800
85	150	8.83.16850
90	160	8.83.16900
95	170	8.83.16950
100	180	8.83.16100

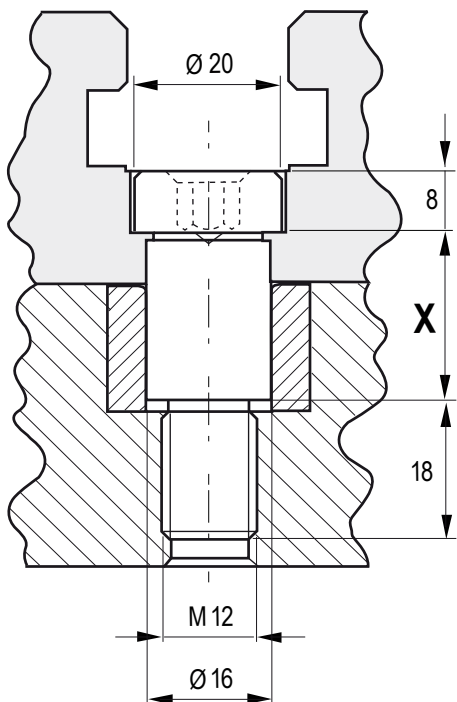
Art. 83

Vite calibrata a colletto
Shoulder calibrated screw



Art. 83B

Vite calibrata a colletto
Shoulder calibrated screw

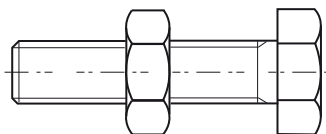


20	50	8.83B1620
25	50	8.83B1625
30	60	8.83B1630
35	60	8.83B1635
40	70	8.83B1640
45	80	8.83B1645
50	90	8.83B1650
55	90	8.83B1655
60	100	8.83B1660
65	110	8.83B1665
70	120	8.83B1670
75	130	8.83B1675
80	140	8.83B1680
85	150	8.83B1685
90	160	8.83B1690
95	170	8.83B1695
100	180	8.83B1610

Dimensioni mm / Dimensions mm	Peso gr Weight	Cod.	€
Art. 83C			
M10 x 50		8.83C.413010	15
M10 x 60		8.83C.413020	15
M12 x 50		8.83C.513010	15
M12 x 60		8.83C.513020	15

Art. 83C

Vite di riscontro
Bolt travel limit

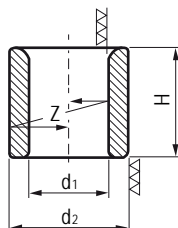


Dimensioni mm / Dimensions mm	d1	d2	H	Z	Cod.	€
Art. 83D						
16F7	26N6	16	0,01	8.83.D0000	6	

Art. 83D

Bussole di centraggio in acciaio speciale cementato HRC60. DIN 179C - 16 mm

Centering bushing are in special alloy steel case hardened and heat treated hardness HRC60. DIN 179C - 16 mm

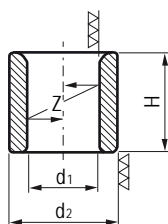


Dimensioni mm / Dimensions mm	d1	d2	H	Z	Cod.	€
Art. 83E						
12H7	18N6	12	0,01	8.83.E0000	5	

Art. 83E

Bussole di centraggio in acciaio speciale cementato HRC60. DIN 179C - 12 mm

Centering bushing are in special alloy steel case hardened and heat treated hardness HRC60. DIN 179C - 12 mm



Dimensioni mm / Dimensions mm	Cod.	€
Art. 83F		
Filetti riportati in acciaio INOX M12 M12 stainless steel helicoil	8.83.F0000	2

Art. 83F

Filetti riportati in acciaio INOX M12
M12 stainless steel helicoil



Dimensioni mm / Dimensions mm	Cod.	€
Art. 83G		
Filetti riportati in acciaio INOX M10 M10 stainless steel helicoil	8.83.G0000	2

Art. 83G

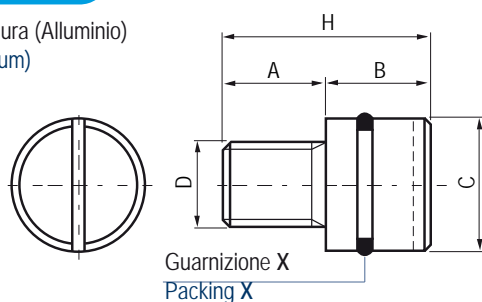
Filetti riportati in acciaio INOX M10
M10 stainless steel helicoil



Dimensioni mm / Dimensions mm	A	B	C	D	H	X	Cod.	€
Art. 84								
10	11	12	M10	21	OR.108	8.84.403010	4	
15	16	16	M12	31	OR.3043	8.84.503010	4	
15	19	20	M16	34	OR.119	8.84.603010	6	

Art. 84

Tappi di chiusura (Alluminio)
Plug (Aluminium)

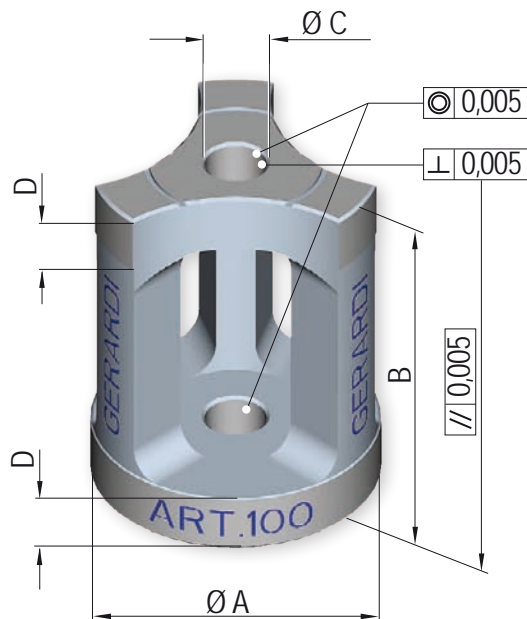


STAFFE INTELLIGENTI INTELLIGENT CLAMP

Art. 100

Staffe intelligenti
Intelligent clamp

Dolci o temprate
Soft or hardened



A	B	C	D	Cod.	€
80	100	16	16	8.10.08010	340
100	100	20	20	8.10.01010	360
100	120	20	20	8.10.01012	390

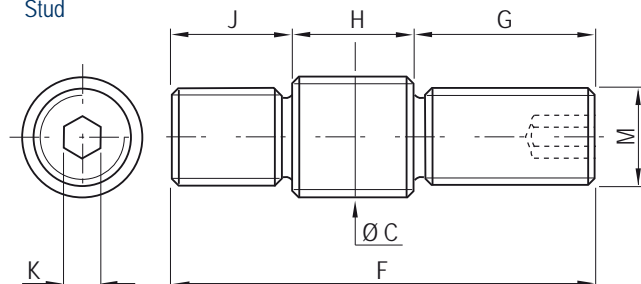
A richiesta anche speciali / On request taylor made

PRIGIONIERO STUD

Art. 101

Prigioniero
Stud

Dadi e rondelle inclusi
Including washer and nuts



E	F	G	H	J	K	M	Cod.	€
16	80	30	30	20	6	16	8.10.12080	20
20	100	35	40	25	6	20	8.10.12410	24
20	120	40	50	30	6	24	8.10.13012	30

A richiesta anche speciali / On request taylor made



Art. 376 in dotazione / Standard equipment

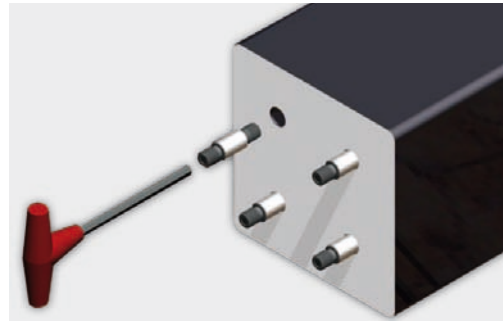
- 1- Un primo lato del particolare da lavorare deve prima essere finito e predisposto per adattarsi alle staffe G.i. Normalmente si devono realizzare fori di precisione con filetto finale che servono per il posizionamento e l'ancoraggio superiore delle staffe G.i.
- 2- Ancoraggio inferiore delle staffe G.i. sulla Vostra tavola a reticolo, oppure tramite una piastra a reticolo di interfacciamento se la Vostra tavola non può adattarsi alle staffe G.i.

- 1- The first face of the work piece must be finished to fit the new G.i. clamps. This means to make precision holes with a bottom thread which is used to fix the upper part of the G.i. clamps.
- 2- Fix the lower part of the G.i. clamps to the modular grid table or to another modular grid plate for interfacing with the normal table.

SUCCESSIONE DELLE FASI DI LAVORAZIONE CON LE STAFFE INTELLIGENTI Gi
WORK CYCLE OPERATIONS WITH INTELLIGENT CLAMPS Gi
1


Lavorazione della prima faccia del pezzo grezzo e realizzazione delle sedi dei prigionieri con interassi simili al vostro piano a reticolo

First face of the rough workpiece must be finished including precision holes with bottom thread with same pitch of your grid plate for placing stud

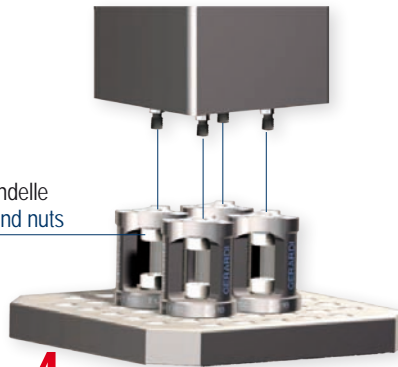
2


Inserire i prigionieri nella faccia del pezzo lavorato

Place the studs in the finished face


3

Fissare le staffe G.i. sul piano a reticolo per mezzo dei prigionieri
Fix the G.i. clamps on the grid plate through the studs

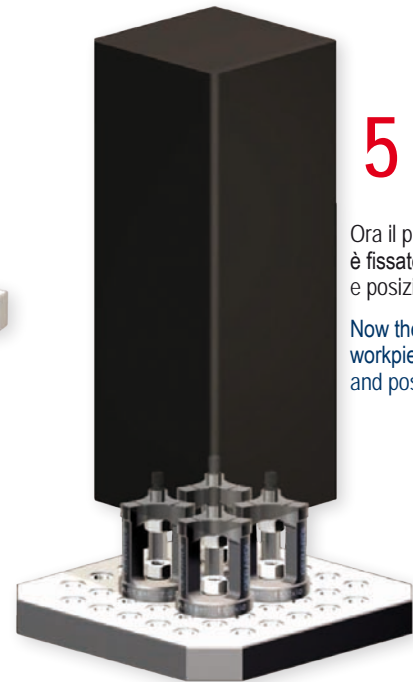


Dadi e rondelle
Washer and nuts

4

Sollevare il pezzo con inserti i prigionieri e fissarlo sulle staffe G.i. tramite i dadi

Lift the workpiece with the studs in position and fixed to the G.i. clamps through the nuts

5


Ora il pezzo è fissato e posizionato

Now the workpiece is fixed and positioned

- Minimo ingombro e peso praticamente nullo ! Sistema semplificato al massimo !
- 5 lati liberi da lavorare senza alcun ingombro - Il percorso dell'utensile è libero e senza alcun intoppo
- Precisione di posizionamento facile e sicuro senza alcuna possibilità di spostamento in qualsiasi condizione di lavoro. Ripetibilità entro 0,02mm
- Semplicità, notevole risparmio di tempo e rapidità di staffaggio e posizionamento contemporanei
- Ammortamento praticamente immediato per i costi delle nuove staffe intelligenti G.i.
- Utilizzabili subito su qualsiasi Vs. tavola a reticolo oppure usando piastre di interfacciamento a reticolo se la Vs. tavola a cave non può adattarsi alle staffe G.i.
- Innalzamento automatico del Vs. pallet per centri di lavoro orizzontali che normalmente necessitano di una sovravola per sfruttare a pieno la corsa verticale del mandrino
- Disponibili sia dolci che temprate

- A simple system - Light weight - Minimum overall dimensions
- 5 free faces of the work piece can be machined without interference and the cutting tool can travel freely
- Easy, safe rigid and very accurate workpiece holding repetability within 0,02mm.
- High time saving with simultaneous and simple workpiece positioning and clamping
- Cost quickly recoverd in time saving
- Readily useable on grid tables or plates or using extra interface plates to the machine table
- Raises the work piece without the need for an extra over table. Thus allowing full utilization of the machine spindle vertical travel
- G.i. clamps available soft or hardened

